

# COACHING STAFF:



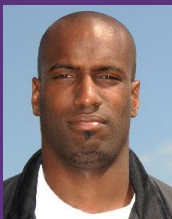
Kurt Mattix  
Defensive Coordinator  
Defensive Backs  
219-866-6253



Chris Pazan  
Offensive Coordinator  
Recruiting Coordinator  
Quarterbacks  
219-866-6201



Mark Franklin  
Offensive Line  
Academic Coordinator  
219-866-6132



Calvin Blackmon  
Wide Receivers  
Equipment Manager  
219-866-6208



David Denham  
Defensive Line  
Video Coordinator  
219-866-6222



From the **south**, take exit 205. Turn right onto Hwy. 231 (north) approximately 10 miles to campus take a left onto Drexel. This will be the third and last place to turn in for campus, there will be a Wall-Mart Caddy-corner Right. Raleigh Hall will be straight ahead.

From the **north**, take exit 215. Turn left onto Hwy. 114 (east) 3.5 miles to College Avenue. Turn right onto College Avenue and proceed approximately 1 mile south. You will see the basketball gymnasium on your right, take a right on Drexel Rd. Raleigh Hall will be straight ahead.

**Directions to St. Joseph's College**  
Saint Joseph's College is located on Hwy. 231 South, just off of Interstate 65.

# PUMA FOOTBALL



## TEAM CAMP



**Lou Esposito**  
Head Football Coach  
**TEAM CAMP**  
**JUNE 21-24**

## *Developing the Total Player:*

Lou Esposito's team camp is designed to enhance individual skills along with advanced team tactics. Every session will involve a "Focus" period broken up by position. We will then break to a "Reality" team session lead by your high school Head Football Coach.

## *Strength and Conditioning:*

Each player will be given instructions on how the Puma Football Team trains not only during the season, but in the off-season as well. Our Strength and Conditioning Coordinator will teach techniques on improving your skills on the forty yard dash, broad jump, vertical jump, shuttle, and the bench press. These techniques will teach you the proper way to improve your athletic explosion which is important to every football player.

## *Check In / Check Out:*

Campers will register between 9:00am-12:00pm on Sunday the 21<sup>st</sup>. The first Focus and Reality sessions will be later that evening. Camp will conclude on Wednesday the 24<sup>th</sup>.

## **ELIGIBILITY:**

HIGH SCHOOL TEAMS ENTERING  
THE 9-12 GRADES FOR FALL 2009

## **COST:**

\$200 PER PLAYER

INCLUDES: 3 MEALS A DAY, AIR  
CONDITION ROOMS, TRAINER,  
MEETING ROOMS

## **EQUIPMENT NEEDED:**

- HELMET
- SHOULDER PADS
- CLEATS
- THIGH PADS
- HIP PADS
- TAILBONE PAD
- GYM SHOES
- SHEETS
- PILLOWS



*Involved For Life*

SAINT JOSEPH'S COLLEGE  
FOOTBALL OFFICE  
POST OFFICE BOX 875  
RENSSELAER, IN 47978